



S.VENDEMIANO (TV)

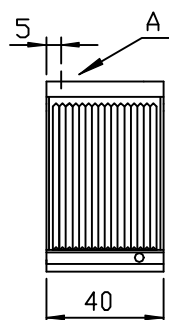
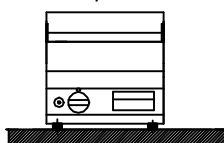
SCHEMA DI INSTALLAZIONE
SCHEMA D'INSTALLATION
INSTALLATIONSPLAN
INSTALLATION DIAGRAM

MOD. 65/40 FTG(CR)
65/40 FTRG(CR)
65/70 FTG(CR)
65/70 FTRG(CR)

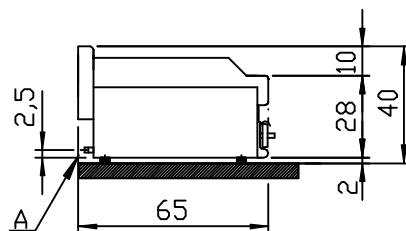
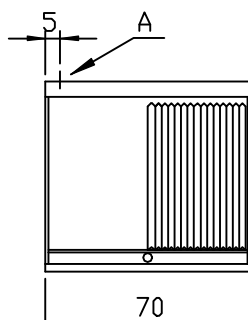
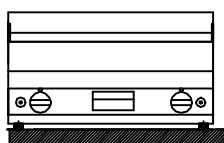
FTG/40A(CR)
FTRG/40A(CR)
FTG/70A(CR)
FTRG/70A(CR)

CODICE
255.269.00
DATA 28-05-1999

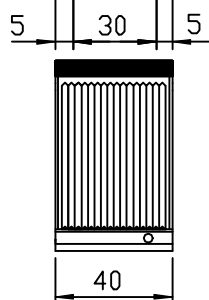
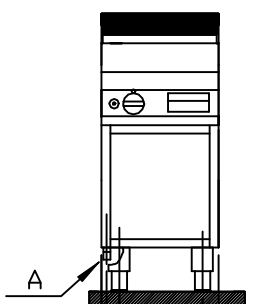
Mod 65/40 FTG(CR)
Mod 65/40 FTRG(CR)
kW 5,7



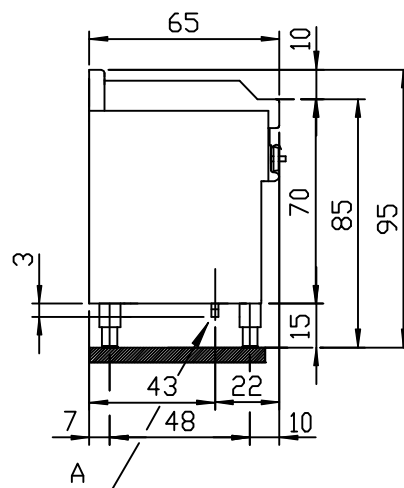
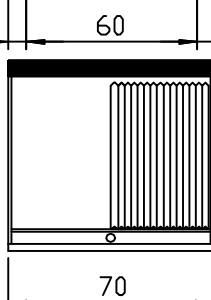
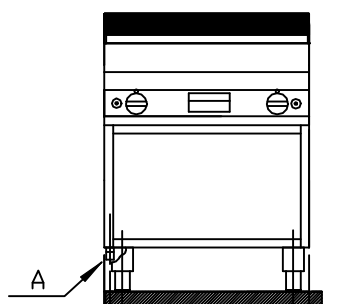
Mod 65/70 FTG(CR)
Mod 65/70 FTRG(CR)
kW 11,4



Mod FTG/40A(CR)
Mod FTRG/40A(CR)
kW 5,7



Mod FTG/70A(CR)
Mod FTRG/70A(CR)
kW 11,4



BRUCIATORI

BRULEURS

BRENNER

BURNERS

Mod 40 N°1 BRUCIATORI kW 5,7

Mod 70 N°2 BRUCIATORI kW 5,7+5,7=kW 11,4

A = Attacco gas 1/2 "G conica
Arrivée gaz 1/2 "G
Gasanschluss 1/2 "G DIN 2999
Gas inlet 1/2 "G
Pour France Denemark
Arrivée gaz 1/2 "G ISO 228-1

ISO 7-1

Tipo di apparecchi A :

I suddetti prodotti sono stati approvati per

AT	I ₂ H3B/P	BE	I ₂ E+3+	DE	I ₂ ELL3B/P
DK	I ₂ H3B/P	ES	I ₂ H3+	FI	I ₂ H3B/P
FR	I ₂ E+3+	GB	I ₂ H3+	GR	I ₃ +
IE	I ₂ H3+	IT	I ₂ H3+	LU	I ₂ E3B/P
NL	I ₂ L3B/P	NO	I ₃ B/P	PT	I ₂ H3+
SE	I ₂ H3B/P	CH	I ₂ H3B/P		
		CH	I ₂ H3+		

SOSTITUISCE PARI NUMERO DEL